



Session- 2022-2023

WORLD ELEPHANT DAY “Haathi Hamare Saathi”

World Elephant Day, observed on August 12, 2022 is one way of recognizing the importance of elephants. The day also focuses on the protection of these giant beings. The day is observed with an aim to reach out to people and educate them on the plight of elephants.

Environment Awareness Cell of St. Bede's organized a painting/sketch competition on the occasion to commemorate “World Elephant Day” 2022 on the theme “Haathi Humare Saathi” in the college auditorium on 16th August, 2022 from 10:00 a.m. to 12:00 p.m. The objective of this programme was to spread awareness about the importance of elephants.

Around 15 girls participated in the event. Participants were asked to display their artistic skills. Only theme-based entries were taken into consideration.

The following were the winners:

1st – Ruby Verma (B. Com, 3rd Year)

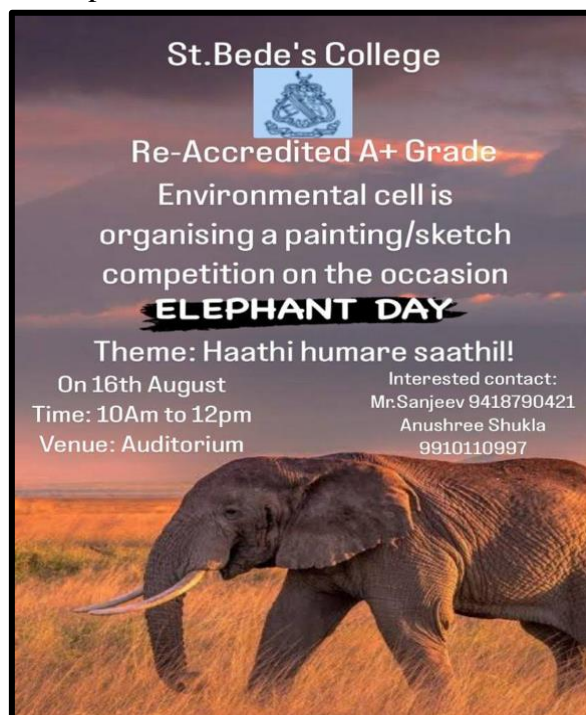
2nd – Takshika Thakran (B.A. Psy. Hons, 2nd Year)

3rd – Darshleen Kaur (B.A. Geog. Hons. 3rd Year)

Sketch Competition

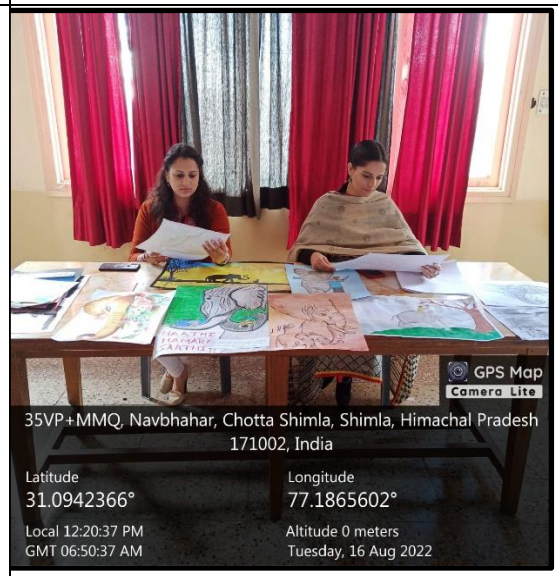
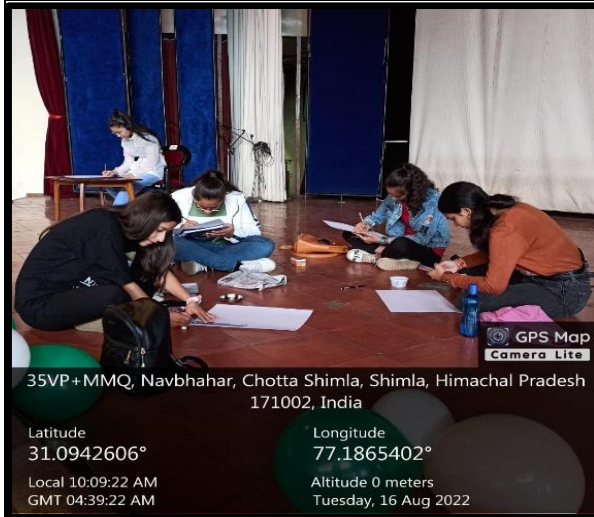
1st – Mehak Ranta (B.A. Psy. Hons, 3rd Year)

The occasion of Elephant Day is a reminder to all of us that we must join hands and make this world a safer place for elephants to live.





Environment Cell
St. Bede's College, Shimla





*Environment Cell
St. Bede's College, Shimla*





*Environment Cell
St. Bede's College, Shimla*

WILD LIFE WEEK- 2ND – 8TH OCTOBER

Nukkad Natak

“Say No to Plastic”

On 4th October, 2022, the Environment Cell and Disaster Management Cell of St. Bede's College Shimla collaborated to raise awareness about environmental protection by organizing a Nukkad Natak at the amphitheater of Gaiety Theatre on the Mall Road in Shimla. The theme of the Nukkad Natak was "Say No to Plastic". The students presented the play to spread awareness about the harmful effects of plastic on the environment. They explained how our unintentional actions are causing irreparable damage to nature. Plastic bags, empty chip packets, and soft drink bottles are all contributing to the accumulation of garbage in the environment, which is causing various problems.



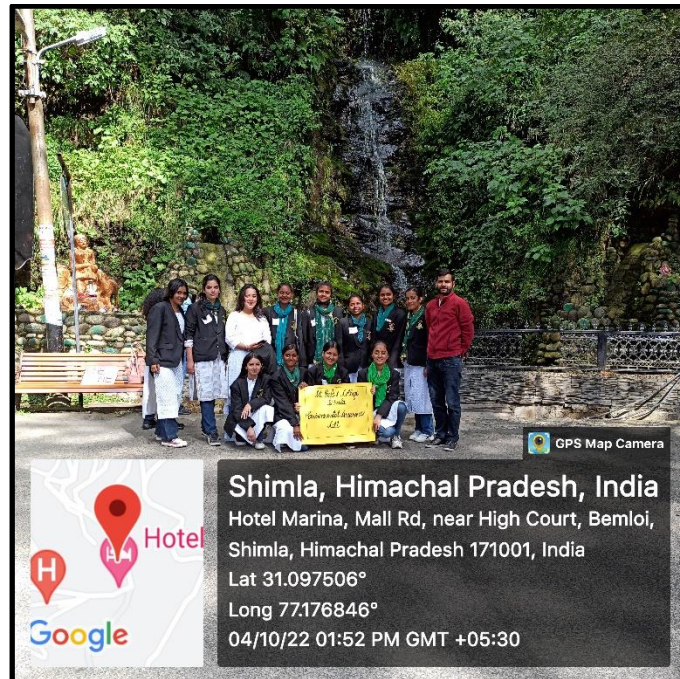


Environment Cell
St. Bede's College, Shimla





Environment Cell
St. Bede's College, Shimla





*Environment Cell
St. Bede's College, Shimla*

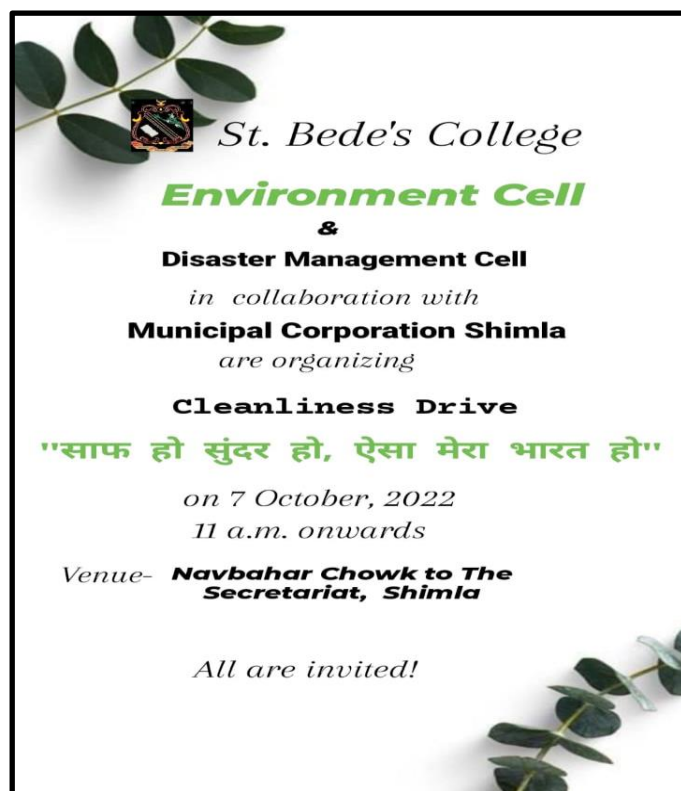
WILDLIFE WEEK

Cleanliness Drive

“Saf Ho Sundar Ho, Aisa Mera Bharat Ho”

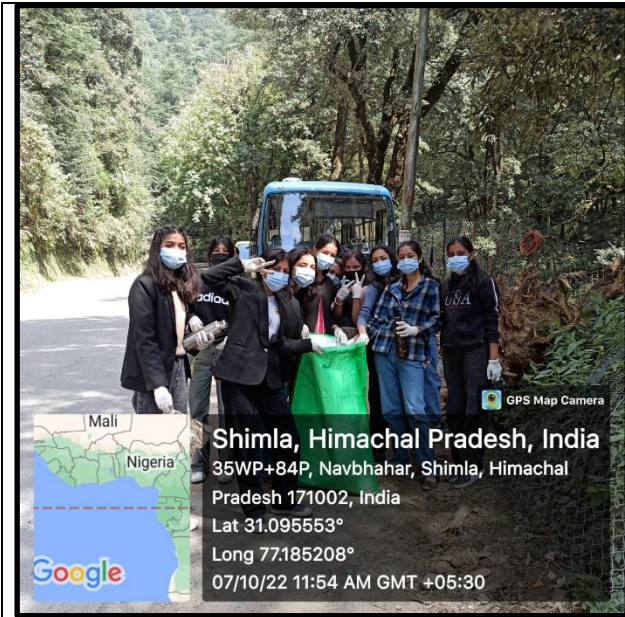
On 7th October 2022, the Environment Cell and Disaster Management Cell of St. Bede's College Shimla, in collaboration with Shimla Municipal Corporation, organized a cleanliness drive named "Saf Ho Sundar Ho, Aisa Mera Bharat Ho" from Navbahar Chowk to The Secretariat in Shimla to emphasize the importance of cleanliness in society. The drive began at 11 a.m. and lasted until 2 p.m., during which over 70 students and four teachers actively participated.

The students handpicked plastic bottles and empty packets from the roads and packed them into garbage bags provided by the Shimla MC. The authorities had granted permission for the cleanliness drive beforehand, and the MC also provided masks, gloves, and a garbage truck for the initiative.





*Environment Cell
St. Bede's College, Shimla*





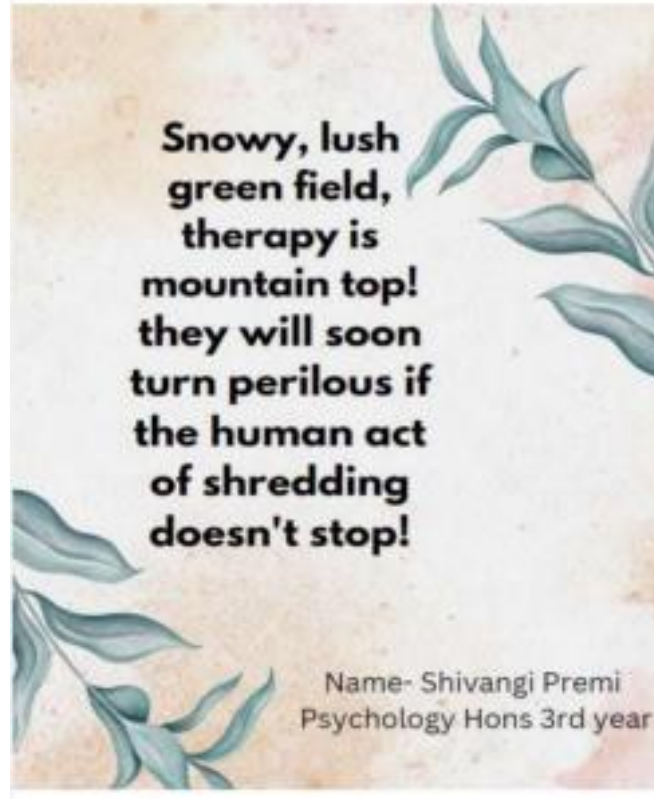
*Environment Cell
St. Bede's College, Shimla*

WORLD MOUNTAIN DAY

“Pahad Hamare Ghar”

On 10th December 2022, the Environment Cell of St. Bede's College, Shimla, organized a Slogan and Poetry Writing Competition on the occasion of International Mountain Day. The theme for the event was "पहाड़ हमारे घर". Many talented girls participated and submitted their slogans and poems. Shivangi Premi, a third-year student of Psychology Honours, won the first position in the poetry writing competition, while Shruti secured the second position. Shivangi Premi also bagged the third position in the slogan writing competition.





पहाड़ हमारे घर

चहचहाती सी उन बस्तियों में,
खिलखिलाते से उन घरों में,
पसीने की उस कमाई से,
खुशहाली के उन लम्हों में,
हे बीत रही पहियों
रूपी जीवन की गाड़ी...॥

मंत्रमुग्ध कर देने वाली उन वादियों में,
केसरी रंग से उस आसमां में,
बर्फिले उन लम्हों में,
चूल्हे के पास बैठ कर
न थकने वाली उन गुफ्तगु भरे एहसास की
कुछ ऐसी है कहानी॥

पशु-पक्षियों की है जो भूमि प्यारी,
प्रकृति की गोद में है
जो जनों की आबादी।
आसमान -जमीन के बीच
कुछ मिलों की है जहां दूरी,
हे वो पहाड़ों की रानी शिमला की कहानी॥

संस्कृति बदलती जहां दूरी-दूरी पर,
कुल्लू से किन्नौर,
शिमला से सिरमौर,
धीलाधार से चूड़धार तक,
हे जो मिलो लंबी मनमोहक कहानी,
प्रेम भाईचारे के रिश्ते की है वो जुबानी॥

पथ पर न है राह सरल,
पहाड़ों में है जीवन जीने की न सहूलियत इतनी।
थरथराती भरी उस ठंड में,
लकड़ी के घरों की उन बैठकों में



Environment Cell
St. Bede's College, Shimla

To climb a Mountains!

Looks like a long way, a road to climb, so far way!

I take steps one after the other.

This place seems eerie, should I step back and come on some other day?

will my view of it change, is it okay to shudder?

Oh, dear mountains I wish to see your head!

will I tremble down if choose to climb instead?

As the sun starts peeping from the blanket of clouds,

the rays fall on the mountain top...

These rays give me hope and end all my doubts.

Now I begin this journey of climbing a mountain without a stop.

Oh, dear mountains I wish to see your head!

will I tremble down if choose to climb instead?

Golden hue covering all the pines,

Valleys so green and water so blue,

Immortal souls and curvy shrines,

Freshness in the air and morning dew.

Oh, dear mountains I wish to see your head!

will I tremble down if choose to climb instead?

As I am halfway up I can see,

The horizon, a sheer view of ecstasy.

I feel like a warrior ending his boredom, a spree,